

RP62LGBK



A safety strip which prevents fingers being jammed on the hinge side of a door. It is fixed to the door and the jamb on the hinged side.

Note: It is recommended to fit RP62LGBK to the full height of the door/jamb for maximum protection. For longer lengths, butt join together.

RP62LGBK is reversible for a light grey or black finish.

Location: Door and jamb of 0-180 degree opening butt hinged or centre pivot doors.

Finish: Satin clear (silver) anodised aluminium (15µm).

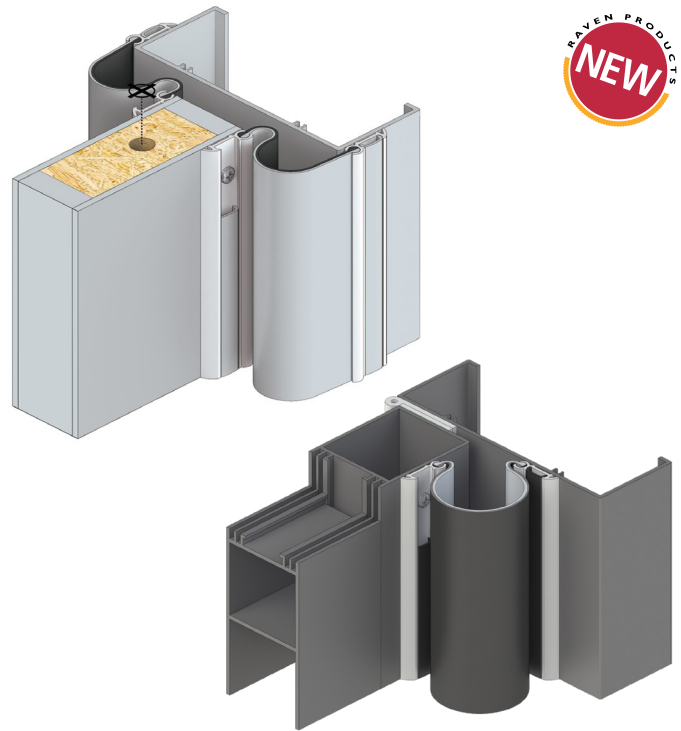
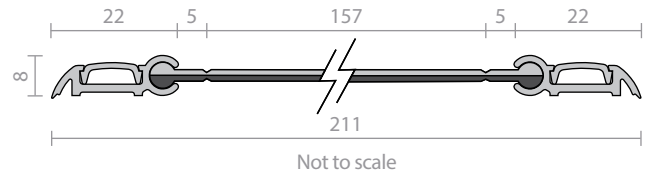
Fixing: Screw fix. Zinc plated, cross recess head S.T. screws and cover strip supplied. Fixing holes are pre-slotted.

Seal: RP462LGBK. Reversible flexible light grey/black PVC rubber. Light grey and black flexible PVC cover strips included.

Sizes: 2500mm.

Approvals

Durability Tested to BS 8613:2017 Class 1 Finger protection devices for pedestrian doors.



Drip-strip

RP67



A drip strip designed to shed or channel water away from the head of exposed doors. Particularly suitable for outward opening doors. The RP67 requires an allowance of 50mm overlap each side of the door opening.

Location: Above doors.

Finish: Satin clear (silver) anodised aluminium (15µm).

Fixing: Screw fix. Zinc plated, cross recess head S.T. screws supplied.

Sizes: Available in stock lengths.

